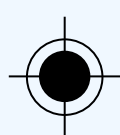
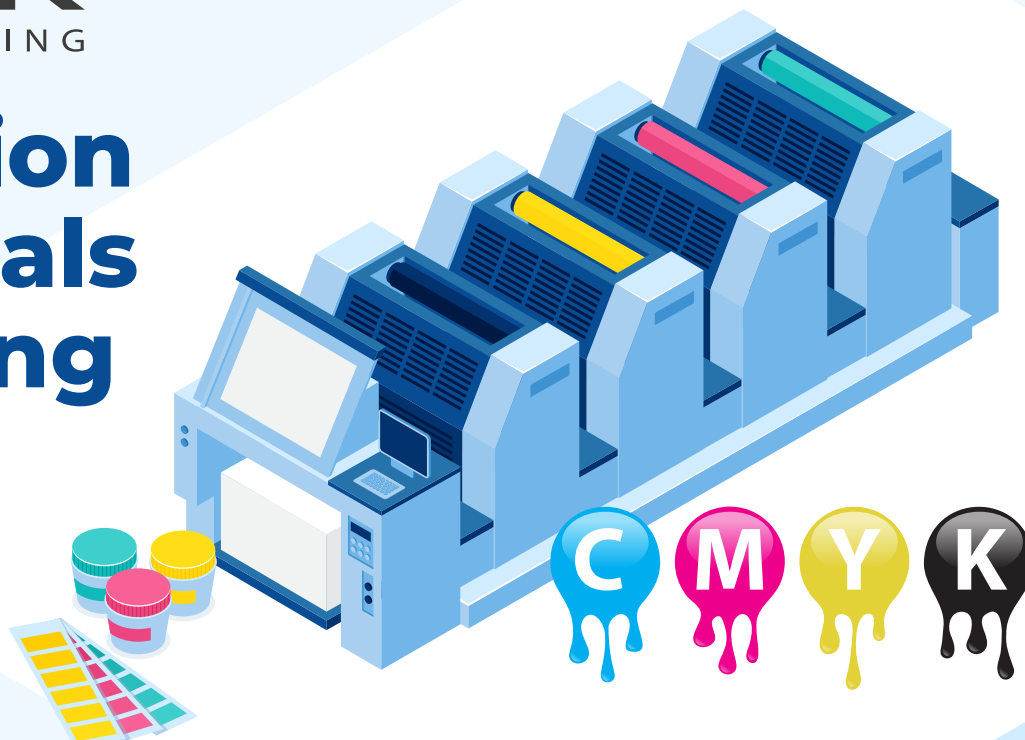


Preparation of materials for printing

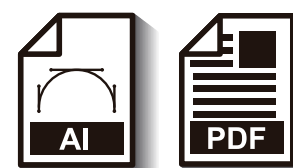


START

Instruction how to prepare files for printing

- Color: CMYK colors + optional | Pantone color keeping the same color scheme of the background (coated and uncoated paper). Printing time with Pantone color can be extended.
- Max inking **300%** (for paper cups/bowls **240%**)
- Text composed of one color (preferred)
- Elements in **“black”** color with set off **overprint** option meet values C=50% M=40% Y=30% K=100%
- **Fonts converted into curves**
- **300 dpi resolution (CMYK)**
- **Graphics extended on a 2-5 mm bleed area (relative to the die-cut)**
- Template line separated with overprint option set on
- File format: editable pdf or ai (images included if necessary)
- Text and important graphic elements located min. 4mm from cup's/bowl's edge

**Graphics dimensions for cups and bowls:
graphics matched by curving according to
the die-cut pattern provided by Click-Pack**

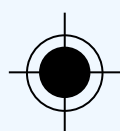


IMPORTANT FOR PAPER CUPS



COMMISSION IMPLEMENTING REGULATION
(EU) 2020/2151

Beverage cups made partly from plastic (PE, PLA) shall bear the following printed marking:



Note: the black line bordering the marking is not part thereof. Its only purpose is to show the thin white line bordering the marking against the white page. The marking shall be placed horizontally on the external surface of the cup away from the rim to avoid contact with the consumer's mouth when drinking. The marking shall not be placed under the base of the cup.

Size of the marking:

- For cups with a volume of less than 500 ml, the minimum size of the marking shall be 1,4 cm by 2,8 cm (3,92 cm²).
- For cups with a volume of 500 ml or more, the minimum size of the marking shall be 1,6 cm by 3,2 cm (5,12 cm²).

The information text **‘PLASTIC IN PRODUCT’** shall be in upper case and in Helvetica Bold font. The font size shall be a minimum of 5 pt for the cups of less than 500 ml and of 6 pt for the cups of 500 ml or more.

The colours having the following colour codes shall be used:

White: C = 0 / M = 0 / Y = 0 / K = 0
 Black: C = 0 / M = 0 / Y = 0 / K = 100
 Red: C = 0 / M = 90 / Y = 60 / K = 0
 Blue: C = 60 / M = 0 / Y = 0 / K = 0

